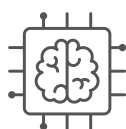




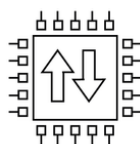
# CURTAIN BIDI



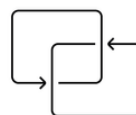
Connection to  
wired switch/push  
button



Automatic limit  
switch adjustment



Electronic  
limit switch



Two-way  
protocol



Radio control

# CURTAIN BIDI

*This motor stands out for its manual function and its bidirectional radio control. With features such as automatic limit switch adjustment and connectivity with home automation control units, the Curtain Bidi offers intelligent and convenient automation.*

## REFERENCES



### CURTAIN BIDI

80.024.001

Fully automatic electronic limit switch.

Two-way radio receiver.

Up to 6 meters of curtain rail.

Manual operation activated with a slight pull to open or close.

Obstacle detection

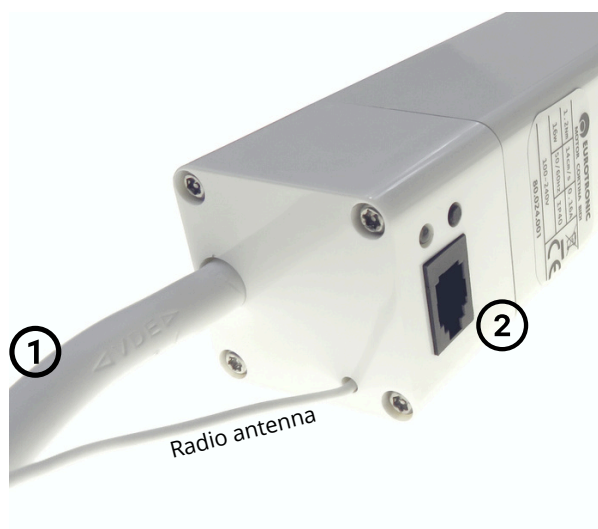
Silent and fast.

Push button cable outlet (100-240v version)

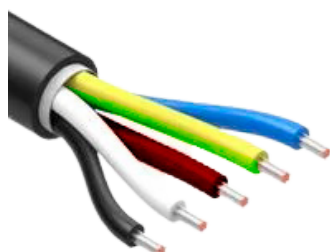
## TECHNICAL CHARACTERISTICS






Par-nominal	Speed	Feeding	Nominal power	Amperage	Working time	Max rotations	Degree of protection	Length measurement	Max Weight
1,2 Nm	14 rpm	100-240V	16 In	0.16 A	4 min	∞	IP 20	386 mm	50 Kg

## MOTOR CONNECTORS



①

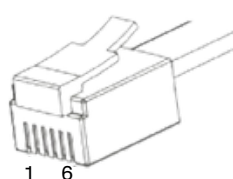


	Neutral
	Phase/common push button
	Open button
	Close button
	Land

②



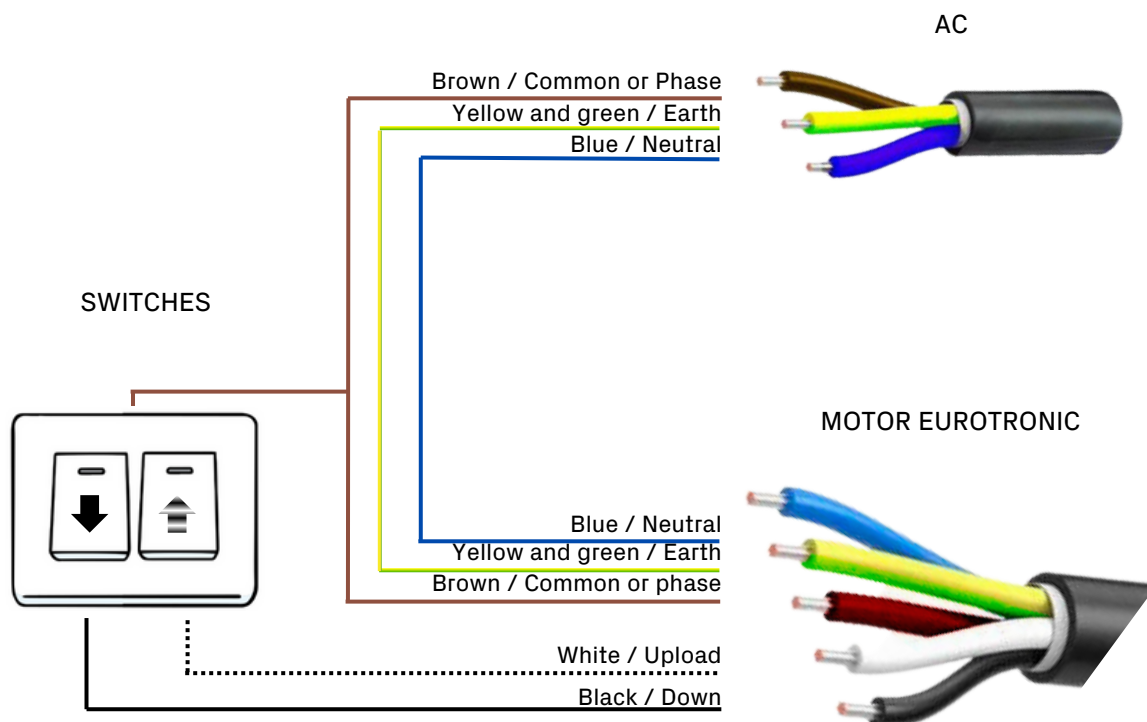
RJ11 output for RS485 connection



RJ11

1.	Land	6.	Earth
2.	Open	5.	5V
3.	Close	4.	12V

## ELECTRICAL DIAGRAM



## COMPATIBLE CON:



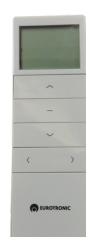
**KUMO WAVE**

BD.100.001



**KIK1**

BD.003.101



**KIK15**

BD.003.115



**KIKWALL**

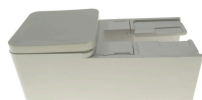
90.003.101



**KIKWALL15**

90.003.115

## ACCESSORIES:



**VERTICAL TERMINAL  
RAIL MOTOR SIDE**

80.024.003



**TOPE RIEL**

80.024.010



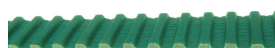
**TERMINAL VERTICAL  
RIEL**

80.024.004



**HOOK TERMINAL RAIL**

80.024.011



**TOOTHED BELT 12MM  
100M/U.**

80.024.005



**CEILING SUPPORT**

80.024.012



**ALUMINUM RAIL  
6M/U.**

80.024.006



**RAIL UNION**

80.024.013



**METAL BAND UNION**

80.024.007



**RAIL UNION SCREW**

80.024.014



**TRANSPORT CART**

80.024.008



**PERFECT WAVE 8MM  
RAIL 1000M/U.**

80.020.017

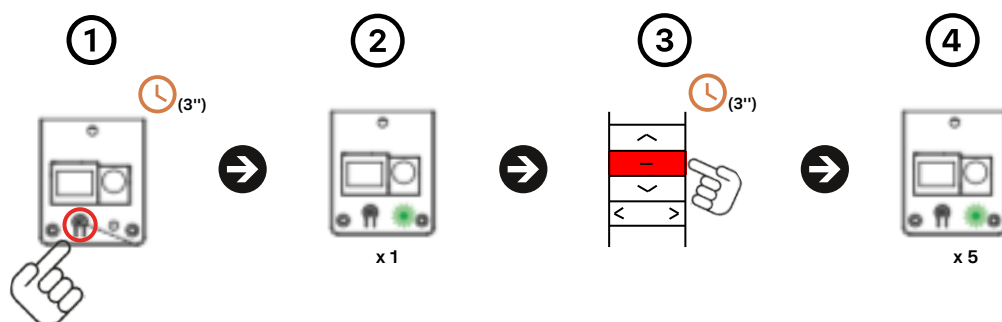


**CART**

80.024.009

## INSTRUCTIONS:

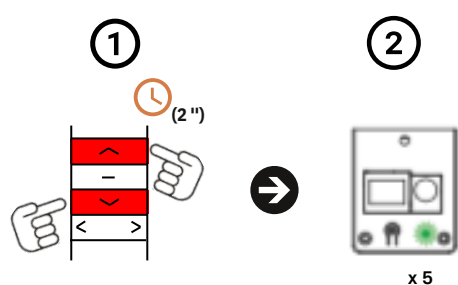
### 1. LINK FIRST TRANSMITTER



#### Procedure:

1. Turn on power and then press the motor programming button for two seconds (2'').
2. The Green LED will light up.
3. Press (STOP) on the transmitter to record for three seconds (3'').
4. The Green LED will flash five times (x5).

### 2. CHANGE DIRECTION OPENING/CLOSING

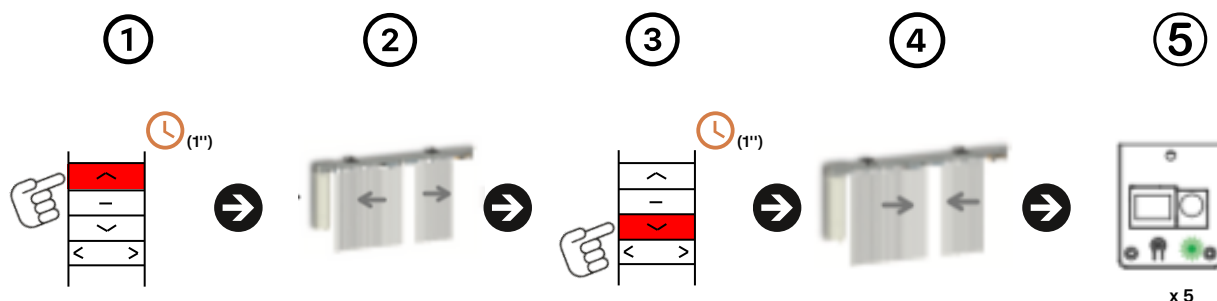


#### Procedure:

1. Press the (OPEN) + (CLOSE) button on the already memorized transmitter for two seconds (2'').
2. The Green LED will flash five times (x5).

**This function is necessary for the correct interpretation of the Motor in the Eurotronic APP**

### 3. PROGRAMMING LIMIT SWITCHES

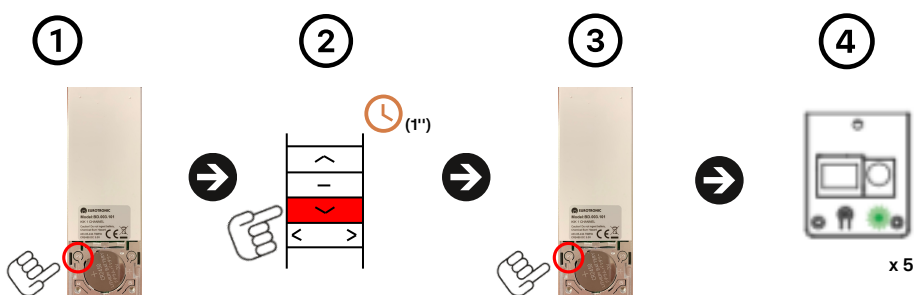


#### Procedure:

With the motor connected to power and once the remote control has been recorded.

1. Press the (UPLOAD) button on an already recorded transmitter for one second (1").
2. The motor will open until it stops due to pressure and will record the opening limit switch at that point.
3. Then press the (CLOSE) button on the same transmitter for one second.
4. The motor will close until it stops due to pressure and will record the closing limit switch at that point.
5. At the end of the process and if it was correct, the green LED will flash five times (x5).

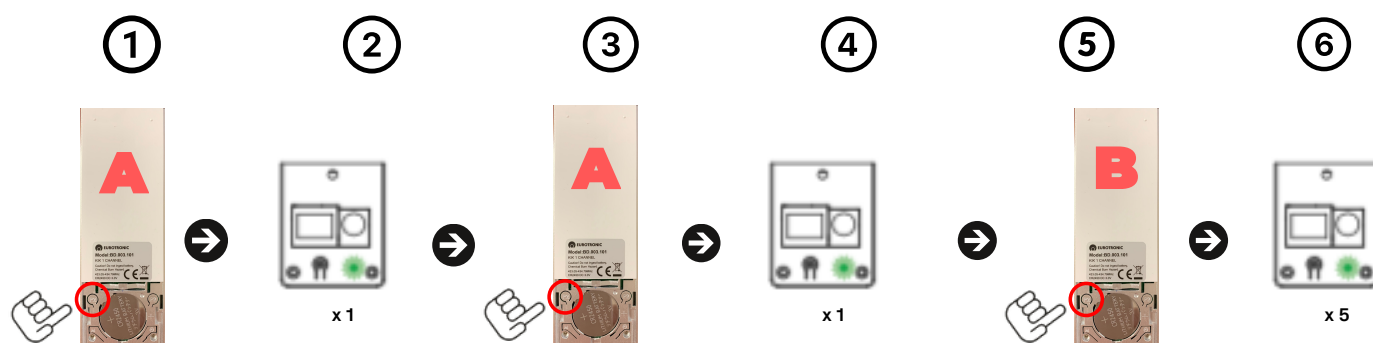
### 4. DELETE LIMIT SWITCHES



#### Procedure:

1. Press the button (P2) located behind the transmitter already memorized.
2. Press the (CLOSE) button on the transmitter for one second (1").
3. Press the button (P2) on the transmitter again.
4. The Green LED will flash five times (x5) to confirm.

## 5. ADD/DELETE ADDITIONAL TRANSMITTER



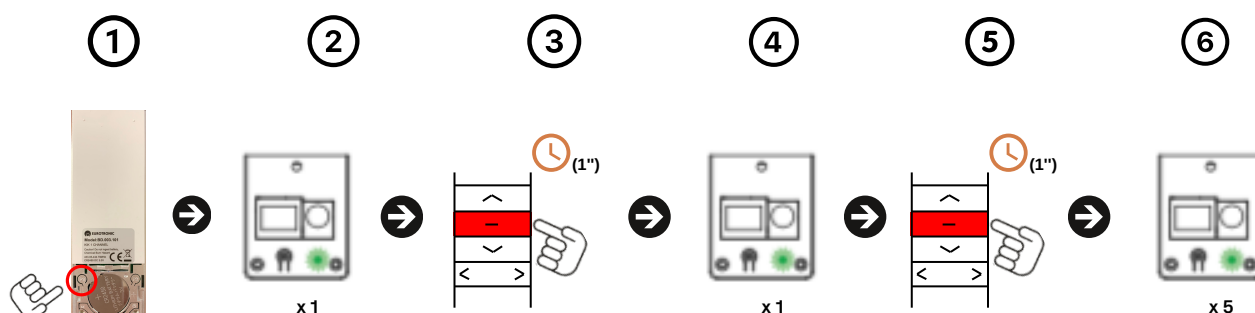
### Procedure:

1. Press the button (P2) located behind the already linked transmitter (A).
2. The green LED will flash.
3. We will press the button (P2) of the same transmitter (A) again.
4. The green LED will flash.
5. Next, press the (P2) button on the new transmitter (B).
6. The green LED will flash five times (x5).

**Repeat the same process to delete the linked transmitter.**



## 6. ADD/DELETE FAVORITE POSITION

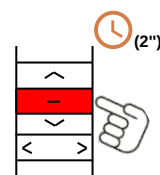


### Procedure:

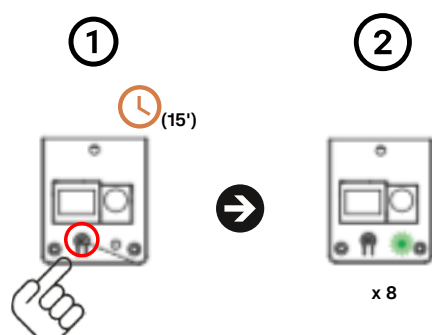
We will position the motor in the desired favorite position using the up or down button on the transmitter.

1. We will press the button (P2) located behind the transmitter.
2. The green LED will flash.
3. We will press the central button (STOP).
4. The green LED will flash.
5. We will press the central button (STOP) for the second time to confirm.
6. The green LED will flash five times and the favorite position will be set.

To search for the favorite position, press the (STOP) button for two seconds.



## 7. RESET TO FACTORY MODE



### Procedure:

1. Press the Motorprogramming button for fifteen seconds (15").
2. After this time the green LED will flash eight times (x8) to confirm.



[www.eurotronic-europe.com](http://www.eurotronic-europe.com)

C/Pica d'Estats, 108-118 Poligono Industrial Sant Isidre  
08272 Sant Fruitós de Bages (Barcelona) SPAIN

[pedidos@eurotronic-europe.com](mailto:pedidos@eurotronic-europe.com) Tel: +34 932 420 108